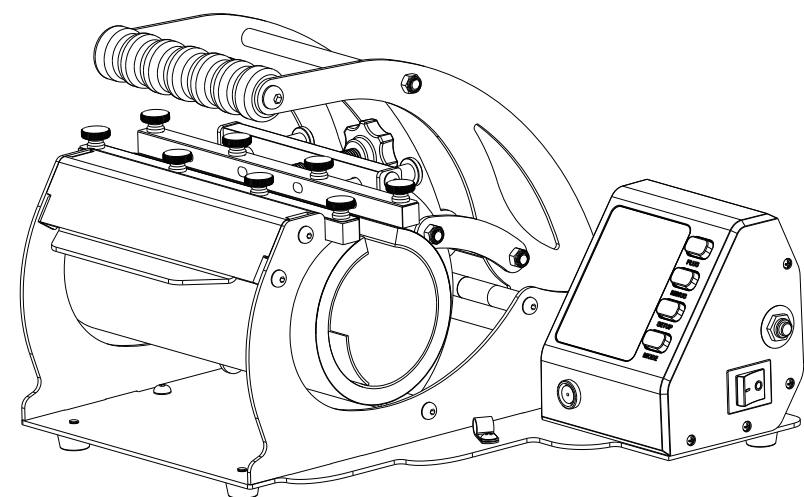


HEAT PRESS PD220



EN Start Here

Warning: Warnings must be followed carefully to avoid body injury.

Transfer Parameter(for reference)

Item	Material	Temperature	Time
Aluminum bottle	Vacuum cup	180°C(360°F)	90S
11oz mug	12oz mug	180°C(360°F)	180S

Main parameters

Product Name	Pro mug press machine	Rated voltage	110V/220V
Item No.	PD220	Rated power	560W
Highest temperature	210°C 410°F	Time range	1-999s
Transfer specifications	22oz	Length of the cable	1.5 M
Machine size	320*340*240mm		

Operation Introduction

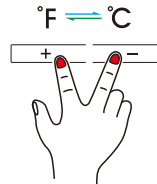
1

+ Plus

- Minus

⚙️ Setup

👤 Mode



Note: Press (+/-) to switch Fahrenheit and Celsius



+
PLUS
3s

1.Manual plus
2.Long press for 3 seconds to set automatic shutdown time (factory default 240minutes)

-
MINUS

1.Countdown reset

⚙️
MODE

1.Set the temperature set the time
2.Long press for 3 seconds to correct temperature +30 degrees or -30degrees

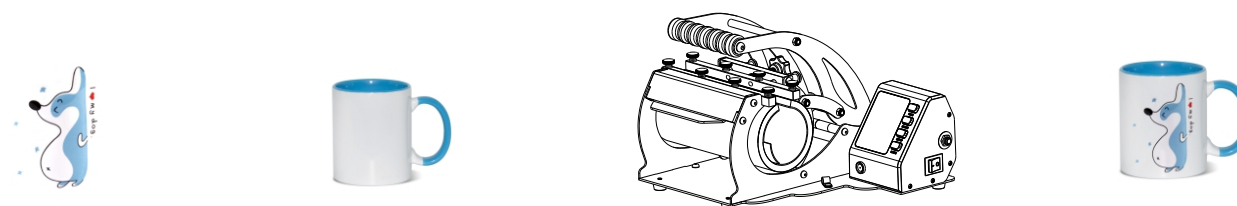
👤
MODE

Three settings can be stored

+ **-**
PLUS MINUS

Temperature conversion
°F ↔ °C
Fahrenheit-Celsius

Operation Steps



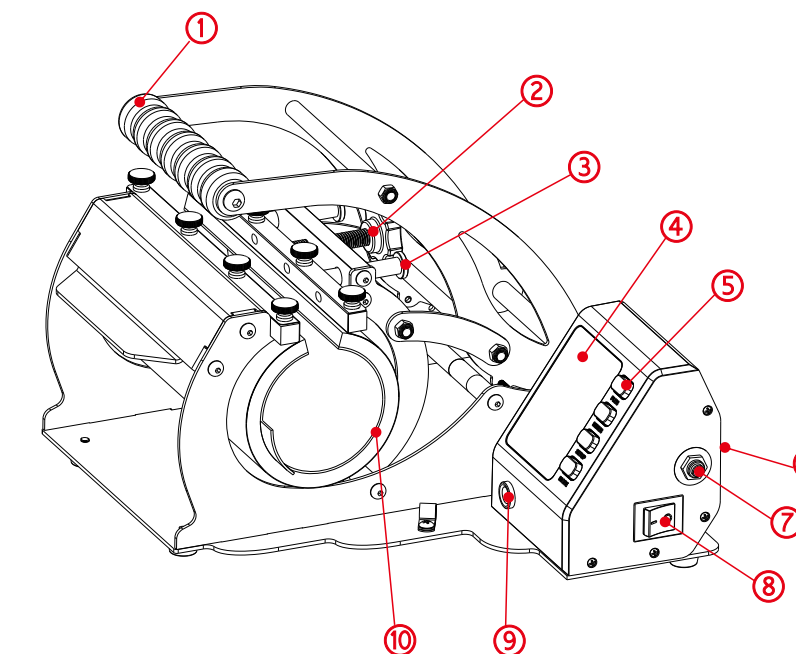
1. Set the temperature, such as ceramic mug 180 degrees, 180 seconds
2. After the temperature reaches 180 degrees, put the mug with the sublimation paper in the machine, press down the handle, and use moderate force.
3. The machine will count down automatically after the handle is pressed down, and the mug can be taken out after the countdown is completed.

Accessories installation diagram

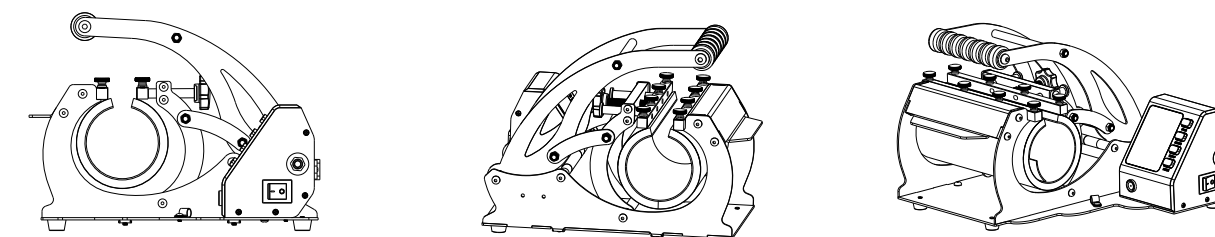
Please perform all operations after power off

Main spare parts

- 1.Handle : put pressure on
- 2.Adjusting lever
- 3.Guide rod
- 4.Display screen
- 5.Button
- 6.Power socket
- 7.Overload protector
- 8.Power switch
- 9.Aviation connector
- 10.Heating pad



Adjusting rod: adjust the pressure of the heater according to the mug specifications.
Guide rod: to ensure that the pressure at both ends of the mug heater is balanced.



Side view

Front view

Common problem:

- E1/E2:** E1/E2 appearing on the display means that there is a short circuit/open circuit in the temperature probe wire (that is, the wire is broken and connected to cause a short circuit, and the open circuit means that the wire is broken or the plug wire falls off). Check the aviation connector of the mug heater.
1. Before working, you need to prepare the correct materials: sublimation mugs, sublimation paper, etc.
 2. The pattern turns yellow/brown: reduce the temperature or reduce the time.
 3. The color of the pattern is light/white: it is necessary to increase the temperature or add time.
 4. Mug heater bubbles: need to be replaced with new ones.
 5. Temperature not rise: Check whether the heater wiring and the controller are plugged in tightly.

Guarantee

The products are strictly based on the Consumer Protection Law of the People's Republic of China and the Product Quality Law of the People's Republic of China. The services are as follows:

Within 12 months, this product has the performance failure listed in the "Product Performance Failure Table". It is confirmed by manufacturer and can be used for maintenance service free of charge. If out of validity, damage caused by force majeure, or human causes, the machine is not covered by the warranty, repair in charge.

Safety instruction: Before operating this unit, please read these instructions completely and save them

Notice

- ⚠️ This machine adopts eccentric bearing structure, it is strictly forbidden to adjust the pressure too much to avoid damage to the bearing
- ⚠️ Keep unplugged when moving the machine
- ⚠️ Keep unplugged when installing accessories
- ⚠️ Place on a flat and stable platform and operate under ventilated conditions
- ⚠️ Wear special protective equipment when operating the machine

Warning: Improper use may result in electric shock, fire, personal injury and other damage.

- ⚠️ Do not use this machine in a hazardous location
- ⚠️ Do not use when the machine is not working properly.
- ⚠️ Do not allow children or adults who do not understand this manual to operate this machine.
- ⚠️ Do not disassemble and repair this machine.
- ⚠️ Do not use an unsuitable AC outlet.
- ⚠️ Do not touch the heating plate when the machine heating.



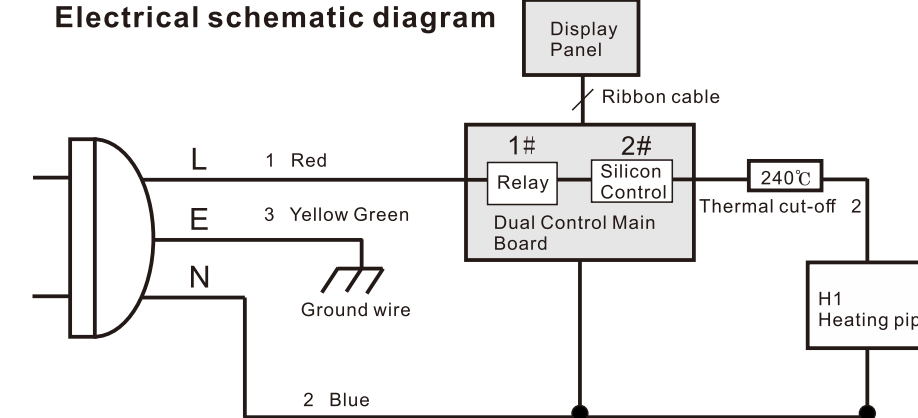
Warning

warranty content

Product Performance Failure Table

Machine body	Parts of the machine itself (excluding main parts)	One year	Fault 1	The machine cannot be used normally according to the operating procedure
Main parts	PCBA(circuit board)	One year	Fault 3	Display error
	Mug heating element	90days	Fault 4	Failure heating

Electrical schematic diagram



- 1.(HEAT)Heating plate input live wire
- 2.(N)The main incoming line zero line n
- 3.(COM)Heating plate input zero line
- 4.(L)Main incoming line L
- 5.(CON1)Button switch line
- 6.(CON2)NTC temperature probe wire
- 7.(CON3)Motherboard and display cable

Circuit Board Wiring Method

